

THE ABCDE SYSTEM OF MELANOMA DETECTION

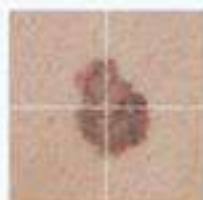
The ABCDE criteria represent a commonly used clinical guide for early diagnosis of melanoma. The following features are considered suspicious:

A

Asymmetry: Moles that have asymmetrical appearance



Symetrical



Asymetrical

B

Border: A mole that has blurry and/or jagged edges



Smooth borders



Irregular borders

C

Color: A mole that has more than one colour



Single color



Multicolor

D

Diameter: Moles with a diameter larger than a pencil eraser (6 mm or 1/4 inch)



Smaller than 6mm/0.2in



Bigger than 6mm/0.2in

E

Evolution: A mole that has gone through sudden changes in size, shape or colour



No changes



Some changes